

Trail etiquette is an important part of keeping our trails fun and safe for all users. Remember to . . .

Share the Trail

- Respect other users, expect other users.
- Be friendly and courteous.
- Bicyclists yield to runners, hikers, and horses.
- Bicyclists should stop to allow horses to pass safely.
- Downhill traffic yields to uphill traffic. When in doubt, yield.
- Warn people when you are planning to pass.
- Bicyclists anticipate other trail users around corners and control your speed.
- Ride within your ability at all times.
- Riding with headphones is dangerous; avoid their use.

Trails

Number and Name	Length (miles)	Map Grid	Activities	Comments	Number and Name	Length (miles)	Map Grid	Activities	Comments
37 – Little Granite Mountain	3.3	C1 E1		Nice views of Granite Mountain. Can be very hot in summer!	349 – Balancing Rock	3.2	C2 D3		Pines and boulders. Please respect private property.
40 – Clark Spring	1.8	D2		Connects with Trails 37 and 261 providing longer adventures.	350 – Surprise Springs	1.3	D3		Rolling terrain with big boulders and pines.
332 – Circle Trail	6.9	E3 D4		Part of the Prescott Circle Trail.	351 – West Lake	1.5	C3 D3		Water faucet available with bucket just west of Forest Road 374 and Trail 345 junction.
341 – Hokaygan Trail	1.4	D4		Part of the Prescott Circle Trail.	352 – Mint Wash Connector	1.2	C3		Excellent views of Granite Mountain Wilderness.
345 – Mint Wash	4.2	A4 C3		Trail follows Mint Wash and is beautiful in the fall.	353 – Metate Connector	.6	C3		Connects Metate Day-Use Area to Trails 351, 349, and 261.
346 – Willow Connector	.5	D4		Connects to Trails 341, 347, 349, and 351.	261 – Granite Mountain*	4.1	B2 C2		Easy first mile, then difficult climb to the top.
347 – Willow	6.8	A4 C4 D4 E5		Great Loop when connected with Trails 348, 352, and 345.	308 – Tin Trough Springs*	3.6	A4		Views of the rugged terrain and boulders.
348 – Chimby Water	.6	C3 D3		Connects to Trails 347, 351, and 352.	*These two trails are within Granite Mountain Wilderness. Mechanized and motorized equipment are not allowed in wilderness areas. Enjoy these areas by horseback or on foot only—no bicycles are allowed.				

Campground and Day-Use Area Notes

- Camping is permitted only in designated campsites.
- At least one person must occupy a campsite during the first night after camping equipment is set up.
- Camping equipment may not be left unattended for more than 24 hours.
- There are no RV dump stations.
- Cleaning or washing fish, animals, or food at water faucets is prohibited.
- Trash receptacles are available. Dumping of any refuse brought as such from private property is prohibited.
- Day-Use Hours: Approximately dawn to dusk. Hours vary by season. See posted hours at each site.
- Horse trailers are welcome at Cayuse Day-Use Area, Williamson Valley, and the Little Granite and Willow Trailheads. Parking trailers elsewhere within Granite Basin is not allowed.
- Cayuse Trailhead has been designed for equestrian parking. Other users please park appropriately and/or use other trailheads if possible.
- Dogs must be on a 6-foot leash at all times and are not allowed in Granite Lake.



Target Shooting and Hunting

Discharging a weapon is prohibited in Granite Basin Recreation Area.

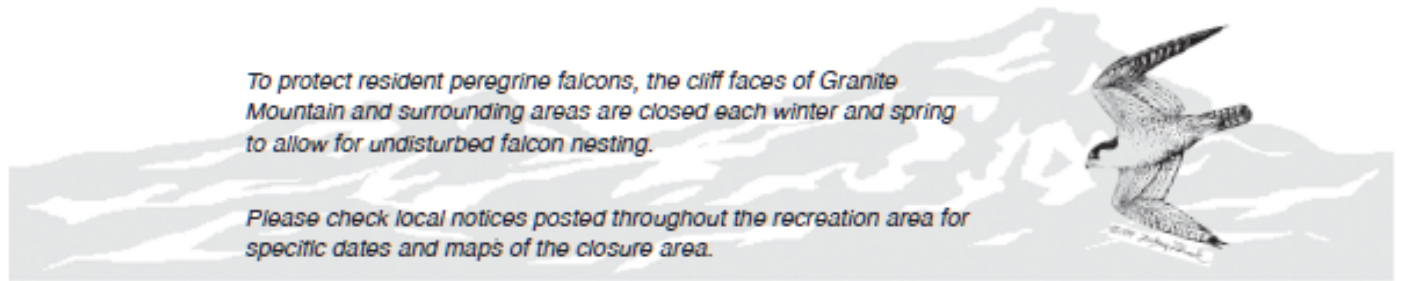


Plan Ahead and Prepare

- Travel and Camp on Durable Surfaces
- Dispose of Waste Properly
- Leave What You Find
- Minimize Campfire Impacts
- Respect Wildlife
- Be Considerate of Other Visitors

Campground											
Name	Map Grid	Elevation (feet)	Number of Sites	Toilets	Drinking Water	Stay Limit (days)	Open Season	Maximum Vehicle		Reservation	Fees (subject to change)
								Size	No.		
Yavapai	D3	5,600	21 (includes 4 double sites)	2	Yes	14	All Year	40 feet	2 at single sites 4 at double sites	No	\$18 for single site \$36 for double sites

Note: A \$5 fee will be charged for a second vehicle at a single site and \$5 each for a third and fourth vehicle at a double site.



To protect resident peregrine falcons, the cliff faces of Granite Mountain and surrounding areas are closed each winter and spring to allow for undisturbed falcon nesting.

Please check local notices posted throughout the recreation area for specific dates and maps of the closure area.

Day-Use Areas and Trailheads						
Name	Map Grid	Number of Tables	Toilets	Drinking Water	Activities	Fees (Subject to Change)
Cayuse	D4	5	1	Yes		\$5
Wekuvde	C3	9	1	Yes		\$5
Playa	C3	6	1	Yes		\$5
Metate	C3	2	1	Yes		\$5
Boat Launch	C3	2	1	No		\$5
Williamson Valley	A4	0	1	No		None
Little Granite Mountain Trailhead	E1	0	0	No		None
Willow	E5	0	0	No		None

Welcome . . . to Granite Basin Recreation Area



Access

From downtown Prescott, take Whipple Street to Iron Springs Road. Continue on Iron Springs Road for 3.5 miles and then make a right on FR 374, Granite Basin Road. Continue on Granite Basin Road for about 3 miles into Granite Basin.

Use Fees

Granite Basin Recreation Area fees are authorized under the Federal Lands Recreation Enhancement Act of 2004. Camping and day-use fees collected here are used to improve facilities and services in this area.

A daily-use fee is charged at developed day-use sites. Payment at one site allows use of all day-use sites on the Prescott National Forest for that day.

Prescott National Forest passes are valid for 4 or 12 months and are honored at all day-use sites. They are available for sale at ranger stations.

Prescott National Forest pass, America the Beautiful, and Golden Age/Access passes are honored here.

No fees are charged for visitors parking at the Williamson Valley, Little Granite, or Willow trailheads or those visitors arriving on foot, bicycle or horseback. Wednesdays are free at all day-use fee sites.

Boating

Electric motors, oars, paddle, or sail-powered boats are permitted on Granite Basin Lake.

Fishing

An Arizona fishing license is required for anglers age 14 and over.

Swimming

Swimming is not permitted at any time in Granite Basin Lake.

Trails

Several miles of trails are open to horses, hikers and bicyclists in Granite Basin. There are no motorized trails in the Granite Basin Recreation Area.



Your recreation fees produced this brochure. Thank you very much for your support!

For More Information, Contact . . .

Prescott National Forest
344 S. Cortez Street
Prescott, AZ 86303
Phone: (928) 443-8000
Fax: (928) 443-8008



Or visit . . .

www.fs.fed.us/r3/prescott/

The U.S. Department of Agriculture (USDA) prohibits discrimination in all its programs and activities on the basis of race, color, national origin, age, disability, and where applicable, sex, marital status, familial status, parental status, religion, sexual orientation, genetic information, political beliefs, reprisal, or because all or part of an individual's income is derived from any public assistance program. (Not all prohibited bases apply to all programs.) Persons with disabilities who require alternative means for communication of program information (Braille, large print, audiotape, etc.) should contact USDA's TARGET Center at (202) 720-2600 (voice and TTY). To file a complaint of discrimination, write to USDA, Director, Office of Civil Rights, 1400 Independence Avenue, SW, Washington, DC 20250-9410 or call (800) 795-3272 (voice) or (202) 720-6382 (TTY). USDA is an equal opportunity provider and employer.

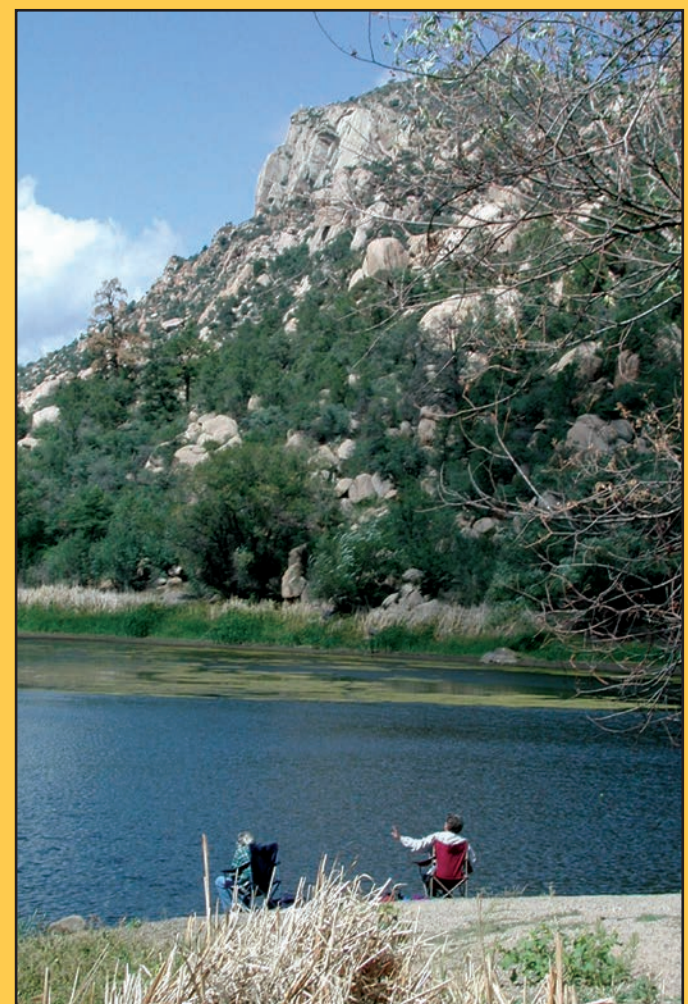
Revised and printed on recycled paper • March 2012



United States Department of Agriculture
Forest Service
Southwestern Region
RG-R3-09-3

Granite Basin Recreation Area

Bradshaw Ranger District
Prescott National Forest





The Highlands Center for Natural History

a non-profit organization, has a learning center and trail system on 80 acres along Walker Road under a special use permit from the Prescott National Forest. The center offers outdoor science education for visitors of all ages, focused on the unique ecology of the Central Arizona Highlands. For more information, call (928) 776-9550.



Lynx Lake Store and Marina

Fishing/camping supplies, bait, boat rentals, cafe, and firewood. Store/marina is only open from late spring to early fall. Restaurant hours vary by season. For current information call (928) 778-0720. Lynx Lake Store and Marina operates under a Special Use Permit from the Prescott National Forest.



Wildlife Viewing

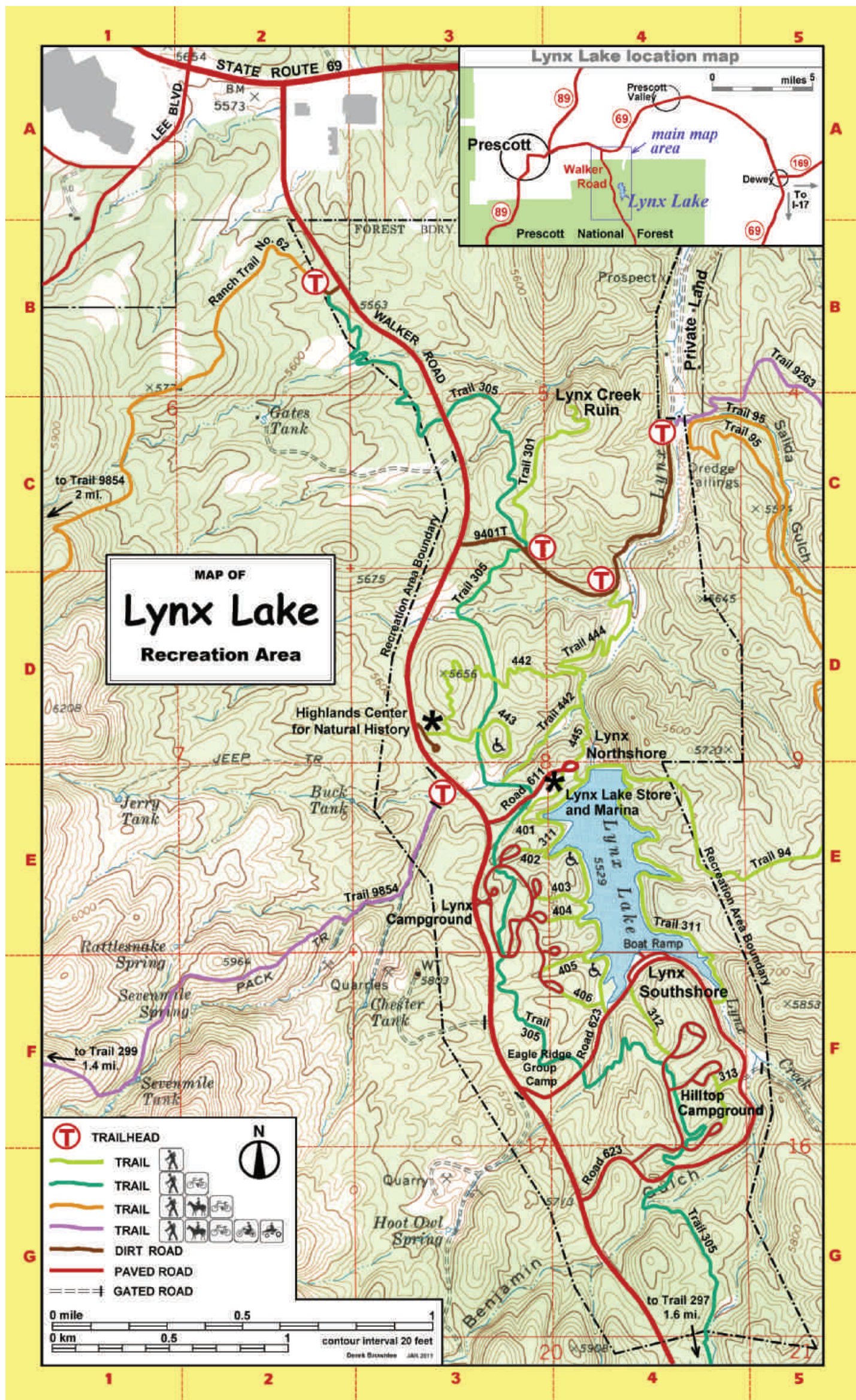
- Lynx Lake is home to a wide variety of wildlife. Summer residents include osprey, javelina, and many small birds. Winter residents include bald eagles, deer, and great blue herons. A keen eye and a sharp ear can help you spot many of these animals.

Closure for Wildlife

The east side of Trail 311 and portions of Trail 94 are closed from December 1 to June 30 each year for nesting bald eagles. The bald eagle is a threatened species and is most likely to produce viable offspring if they are not disturbed by human activity. This closure includes portions of the trails on the dam.



© Les Stukenberg



Trails						
Number and Name	Map Grid	Length (in miles)	Vertical Gain (in feet)	Access	Activities	Comments
62 – Ranch	B2	3.1	1,200	From Hwy. 69 go south about .5 mile on Walker Road to the Ranch Trail (62) Trailhead on the west side of the road.		Great views of Lynx Creek and Lynx Lake. Connects to Trail 9854 and Watershed Trail #299. Remember safety in sharing the trail: bikes yield to hikers and horses. A small part of this trail is part of the Prescott Circle Trail.
95 – Salida Gulch	C4	4.2	420	From Hwy. 69 go south on Walker Road about 1.5 miles. Turn left at Lynx Creek Ruin turnoff (FR 9401T) and drive 1 mile to the trailhead. Take trail 9263 across Lynx Creek just before the gate to get to Trail 95 sign.		An enjoyable loop trail. The trail showcases everything from prickly pear cactus to ponderosa pine and riparian willows.
301 – Lynx Creek Ruin	C3	0.5	120	From Hwy. 69 go south on Walker Road about 1.5 miles. Take a left at Lynx Creek Ruin turnoff (FR 9401T) to Lynx Ruin Trailhead.		Short interpretive trail through pinon and juniper to an observation platform at a prehistoric ruin. Fee is \$5.
305 – Homestead	B3 G4	7.0	100	Lynx Creek Ruin Trailhead, The Ranch Trailhead #62 or Trail 297.		Beware at road crossings! This trail connects to several sites and other trails. Bikes yield to hikers.
311 – Lynx Recreation	E4 F4	2.3	20	Lynx Northshore, Lynx Southshore or Lynx and Hilltop Campgrounds.		A popular hiking trail that goes around Lynx Lake. The west side is paved and accessible to wheelchairs. Fee is \$5.
9263 – Salida Connection	C4	4.3	700	See directions for Salida Gulch Trail #95 above.		Trail climbs uphill for most of its length. Good views! Remember safety in sharing the trail: bikes yield to hikers and horses. ATVs and motorcycles ride responsibly - stay on trails, tread lightly and watchout for others.
9854 – Sevenmile	E3	3.1	1,020	From Hwy 69 go south on Walker Road about 2.5 miles. Trailhead is on the right.		Connects Walker Road (CO 57) to Watershed Trail #299 and to Senator Highway (CO 56). Remember safety in sharing the trail: bikes yield to hikers and horses. ATVs and motorcycles ride responsibly - stay on trails, tread lightly and watch out for others.

Fee (Subject to Change)	Activities	Drinking Water	Toilets	Number of Tables	Map Grid	Name
None		No	1 Vault	1	B2	Trail 62
\$5		Seasonal	2 Vault	28	F4	Lynx Southshore
\$5		Seasonal	1 Flush	8	E4	Lynx Northshore
\$5		No	1 Vault	3	C4	Lynx Creek Ruin
None		No	2 Vault	0	C4, D4	Gold Pan

Day-Use Areas

For Reservations call 1-877-444-5777 or visit www.recreation.gov

Name	Map Grid	Elevation (feet)	Number of Sites	Number of Toilets	Maximum # of Vehicles	Reservation	Fee per Night (Subject to Change)
Peregrine	F4	5,713	1	1 Vault	4 vehicles; 2 RVs or trailers	Yes	Up to 25 people = \$50
Osprey	F3	5,713	1	1 Vault	13 vehicles; 3 RVs or trailers	Yes	1-50 people = \$75 51-75 people = \$125

Eagle Ridge Group Campground

Name	Map Grid	Elevation (feet)	Number of Sites	Number of Toilets	Maximum # of People		Reservation	Fee per Night (Subject to Change)
					Single Site	Double Site		
Lynx	E3 E4 F3	5,600	35	2 Flush 4 Vault	10	20	Yes	\$36
Hilltop	F4	5,700	37	5 Vault	10	20	No	\$36

Campgrounds

- Your camping fee covers:
 - 1 vehicle for a single family campsite
 - 2 vehicles for a double campsite
 - \$5 for 2nd vehicle at a single family campsite.
 - \$5 for a 3rd vehicle and \$5 for 4th vehicle at a double campsite.
- An RV towing a car counts as 1 vehicle.
- A vehicle pulling a trailer counts as 1 vehicle.
- Maximum number of RVs and trailers is 1 per single family campsite.
- Two motorcycles count as 1 vehicle.
- Not all campsites will accommodate the maximum vehicle length of 40 ft.
- Maximum vehicles: 2 at a single family campsite and 4 at a double campsite.

Vehicles

- Day-Use Area Notes**
- Camping is available April 1 through October 31.
 - All campsites have tables and grills. Fires are permitted only in stoves or designated fire rings.
 - No RV hookups or sanitary dump stations in campground.
 - Camping is permitted only in designated campsites.
 - At least one person must occupy a campsite during the first night after camping equipment is set up.
 - Camping equipment cannot be left unattended.
 - Pets are welcome but must be on a leash 6-foot or less and under physical control at all times.
 - No cleaning or washing of fish, animals, or food at water hydrants or in restroom sinks.
 - Trash receptacles are available. No dumping of any refuse brought from private property.
 - Day-Use Hours: Hours vary by season. Approximately dawn to dusk. See posted hours at each site.
 - Quiet hours from 10 pm to 6 am.
 - Stay limits at Lynx Area campgrounds are 7 days in a 60-day period.
 - Drinking water is available in all campgrounds.
 - Keep wildlife wild. Maintain a clean campsite to reduce nuisance animals and pests.
 - Camping fees include use of day-use sites within the Prescott National Forest. See pay station for details.
 - Eagle Ridge Group Campground has two campsites which can be reserved by one or two groups.
- Target Shooting and Hunting**
- 36 CFR 261.10(d)
- Discharging of any weapon within 150 yards of a recreation site or occupied area is prohibited.

Welcome . . . to Lynx Lake Recreation Area

Lynx Lake is one of the most popular recreation spots in central Arizona. More than 90,000 people visit each year! Mild weather, cool ponderosa pine forest, a serene 55-acre lake, trout fishing, boating, hiking, mountain biking, archaeological sites, and bird watching attract visitors from throughout Arizona, and brings them back again and again.

Use Fees

Lynx Lake Recreation Area fees are authorized under the Federal Lands Recreation Enhancement Act of 2004. Camping and day-use fees collected here are used to maintain and improve facilities and services in this area.

A daily fee is charged at developed day-use sites. Payment at one site allows use of all day-use sites in the Prescott National Forest for that day. *Parking at Lynx Store and Marina is for customers only.*

Prescott National Forest passes are valid for 4 to 12 months and are honored at all day-use sites on the forest. They are available at all Prescott National Forest ranger stations. No fees are charged for visitors arriving on foot or bicycle. Wednesdays are free days.

Boating

Electric and gas motors (under 10 HP), oar, paddle, or sail-powered boats are permitted. Rental boats are available at Lynx Store and Marina, (928) 778-0720.

Fishing

Arizona State Game and Fish Department periodically stocks the lake with trout and other fish species. A State of Arizona fishing license and trout stamp are required for anglers age 14 and over. www.azgfd.gov

Swimming

Swimming by people or dogs is not permitted at any time in Lynx Lake.



Your recreation fees produced this brochure. Thank you very much for your support!

For More Information, Contact . . .

Prescott National Forest
344 S. Cortez Street
Prescott, AZ 86303
Phone: (928) 443-8000
Fax: (928) 443-8008
Fire Information: (928) 777-5799



Or visit . . .

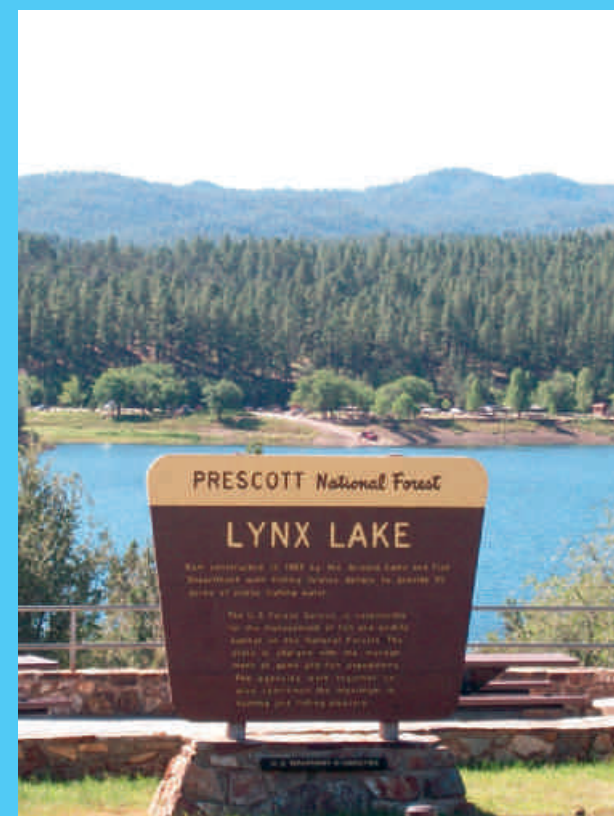
www.fs.usda.gov/prescott/

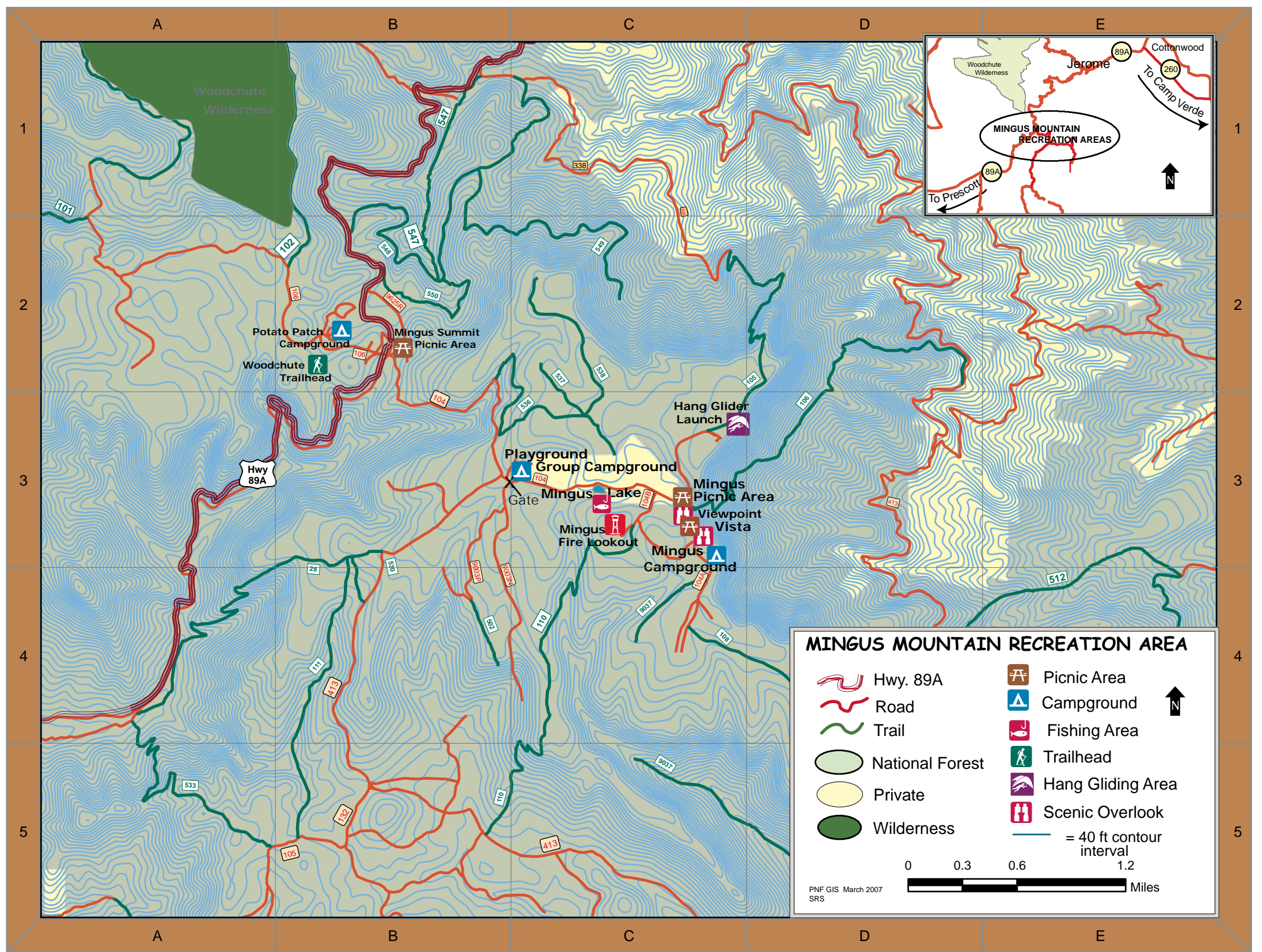
The U.S. Department of Agriculture (USDA) prohibits discrimination in all its programs and activities on the basis of race, color, national origin, age, disability, and where applicable, sex, marital status, familial status, parental status, religion, sexual orientation, genetic information, political beliefs, reprisal, or because all or part of an individual's income is derived from any public assistance program. (Not all prohibited bases apply to all programs.) Persons with disabilities who require alternative means for communication of program information (Braille, large print, audiotape, etc.) should contact USDA's TARGET Center at (202) 720-2600 (voice and TTY). To file a complaint of discrimination, write to USDA, Director, Office of Civil Rights, 1400 Independence Avenue, SW, Washington, DC 20250-9410 or call (800) 795-3272 (voice) or (202) 720-6382 (TTY). USDA is an equal opportunity provider and employer.



Lynx Lake Recreation Area

Bradshaw Ranger District
Prescott National Forest





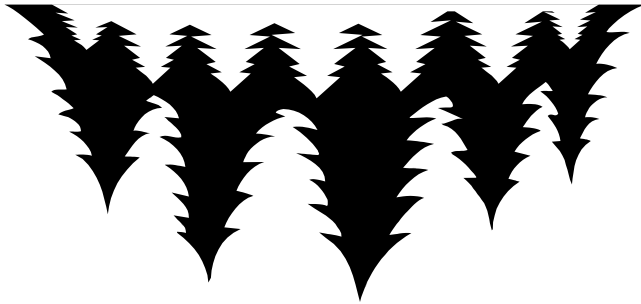
Trails							
Trail No.	Name	Map Grid	Length (miles)	Difficulty	Access	Activities	Comments
108	Coleman	D4	1.8	Difficult	Travel on Forest Road (FR) 104 to FR 104A (right fork in Mingus Campground), then .5 mile to the trailhead near the radio facilities.		This trail provides good views of the Verde Valley and red rock country above Sedona. Use caution on the steep portion of this trail as it may be eroded!
110	Gaddes Canyon	C3-5	2.63	Moderate	Travel on Forest Road (FR) 104 to FR 104B (the lookout road). Follow FR 104B to .1 mile below the lookout; the trailhead is on the left.		Provides an easy day hike from the campground to points overlooking Gaddes Canyon.
533	Little Yeager	A4-5	1.9	Moderate	Travel on Forest Road (FR) 104 to FR 413. Then go southwest on FR 413 for 2.2 miles to the junction with FR 132. From there, take FR 132 to FR 105 and travel on FR 105 for .4 mile past the Trail 111 trailhead to the trailhead for Trail 533.		Can be used with other trails to make a loop.
105	North Mingus	D2	4.25	Moderate	Travel on Forest Road (FR) 104 to Mingus Campground. Go left at the fork and the trailhead is near the hang glider site.		Can be used with other trails to make a loop. This trail provides good views of Jerome, Cottonwood, and the Verde Valley.
106	View Point	D2	1.9	Moderate	Take Forest Road 104 to Mingus Campground. The trailhead is within the campground.		No motorized or mechanized vehicles, including bicycles are allowed. Provides good views of Cottonwood and the Verde Valley.
111	Yeager Cabin	B4-5	1.9	Moderate	Travel Forest Road (FR) 104 for 1.3 miles to FR 413. Go southwest on FR 413 for .8 mile to Trail 28, then .1 mile to the trailhead.		Mainly used as a connection between Trails 28 and 533. This trail stays mostly in the ponderosa pine habitat.
28	Yeager Canyon	A-B3	2.0	Difficult	Travel on Forest Road (FR) 104 for 1.3 miles to FR 413. Go west on FR 413 for .8 mile to the trailhead near the fenced wildlife watering device.		This trail is on the west slope of Mingus Mountain with views of Lonesome Valley and the Prescott Valley area.
102	Woodchute*	B1	2.3	Moderate	Travel on Forest Road 106 for .3 mile to the trailhead. Park in the lot and follow the road about 1/2 mile to the trail.		This trail accesses Woodchute Wilderness. No motorized or mechanized vehicles, including bicycles, are allowed within wilderness. Chutes for logs once ran down the north side of the mountain.

*The Woodchute Trail (Trail 102) is within Woodchute Wilderness. Mechanized and motorized equipment are not allowed in wilderness areas. Enjoy this area by horseback or on foot only—no bicycles are allowed.

As shown on the map, additional trail opportunities are in the area, but not described in the "Trails" table above. Please contact the Ranger District at (928) 567-4121 for more information about these trails.

Day-Use Area and Trailhead						
Name	Map Grid	No. of Tables	Toilets	Drinking Water	Activities	Fee
Mingus Lake	C3	0		No		\$5
Summit Picnic Area*	B1	6		No	 	None
Vista*	D3	6		No	 	None
Mingus Picnic Area	D3	11		Yes	 	\$5
Woodchute Trailhead	B2	0		No	 	None

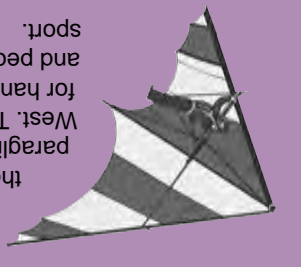
* Two sites are accessible.



**Mingus Campground has a maximum RV length of 22 feet.
 **Playground Group Campground offers a group charcoal grill and picnicking area. There are 4 fire pits and 13 tables scattered throughout the area. Fees are based on group size: 1-25 people = \$75 per night; 26-50 people = \$100 per night; 51-75 people = \$125 per night; and 76-100 people = \$150 per night. Maximum group size is 100 people. For reservations, call 1-877-444-6777.
 ***Potato Patch Campground has one multitenant site in Loop A for \$28 per night.

Campgrounds						
Name	Map Grid	Number of Sites	Toilets	Drinking Water	Electricity	Open Season
Mingus*	Loop A	6		Yes	No	May 1 to Nov. 1
	Loop E	19		Yes	Yes	Nov. 1
Playground Group**	C2	Capacity of 100		No	No	May 1 to Nov. 1
	Loop B	28		Yes	Yes	Nov. 1
Potato Patch***	Loop A	12		Yes	No	May 1 to Nov. 1
	Loop B	28		Yes	Yes	Nov. 1
						Fee
						\$10
						\$14
						\$75 to \$150
						\$14
						\$18

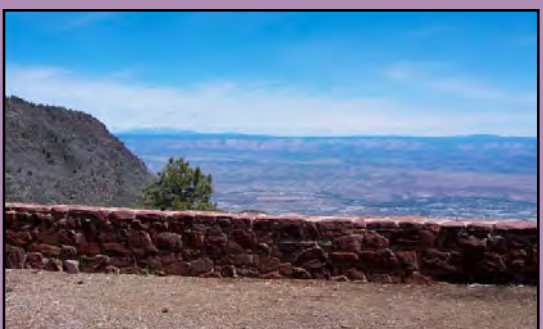
Mingus Mountain is considered one of the best hang glider and paraglider sites in the American West. The site is very popular for hang gliders and paragliders, and people who like to watch the sport.



- be very muddy.
- Forest Road 104 is dirt surfaced and is closed seasonally. During wet weather, this road can be very muddy.
- Use care when visiting the scenic viewpoints—there are steep dropoffs. Watch small children in these areas at all times.
- Day-use hours are 6 a.m. to 10 p.m.
- Dogs must be leashed at all times and are not allowed in Mingus Lake.
- Cleaning or washing fish, animals, or food in drinking fountains or bathroom sinks is prohibited.
- Mingus Lake is surrounded by private land so camping is prohibited.
- Dumping of any refuse brought in from private property is prohibited.
- A one-half mile interpretive trail is in Mingus Campground.
- There are no RV sanitary dump stations.
- user fee is required for the second vehicle.
- Two vehicles are allowed per campsite. A \$5 60-day period.
- The stay limit in campgrounds is 14 days in a unattended for more than 24 hours.
- Camping equipment may not be left during the first night after camping equipment is set up.
- At least one person must occupy a campsite during the first night after camping equipment is set up.

Campground and Day-Use Area Notes
 Potato Patch and Mingus Campgrounds are first-come, first-served. The Playground Group Campground may be reserved by calling 1-877-444-6777.

Welcome . . . to the Mingus Mountain Area



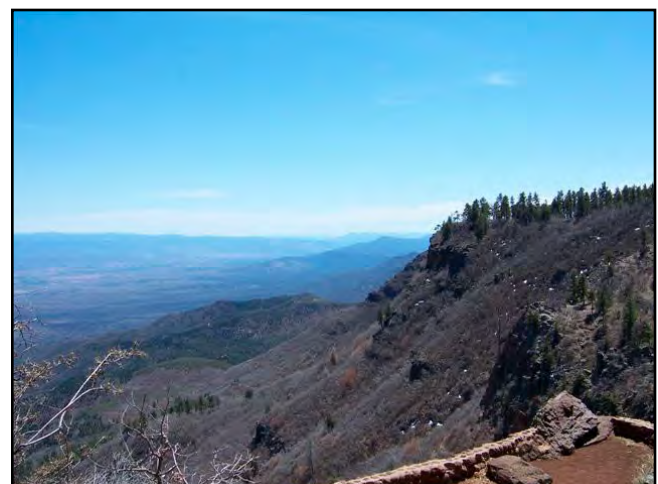
Located high above the historic mining town of Jerome, nestled in the ponderosa pines, the Mingus Mountain area offers relatively cool summertime temperatures and scenic views of the Verde Valley, Sedona red rocks, Mogollon Rim and San Francisco Peaks. Elevations range from 7,000 feet at Potato Patch Campground to 7,500 feet at Mingus Campground.

User Fees

Fees at the Mingus Mountain area are collected under the Recreation Enhancement Act. Camping and user fees are used to improve facilities and services in this area.
 A \$5 day-use fee is charged at developed day-use sites. Payment at one site allows use of all Prescott National Forest day-use sites for that day.
 All day-use sites are free on Wednesdays.
 Day-use passes are valid for 4 or 12 months and are honored at all Prescott National Forest day-use sites. They are available for sale at all Prescott National Forest ranger stations. No fees are charged for visitors arriving on foot or bicycle.

Mingus Lake

Mingus Lake is a small lake enjoyed by many visitors to the Mingus Mountain area. The Arizona State Game and Fish Department periodically stocks Mingus Lake with rainbow trout. A State of Arizona fishing license and trout stamp are required for anglers age 14 and over.
Remember: Boats are not allowed on Mingus Lake.



Your recreation fees produced this brochure. Thank you very much for your support!

For More Information, Contact . . .

Prescott National Forest
 Verde Ranger District
 P.O. Box 670
 Camp Verde, AZ 86322
 Phone: (928) 567-4121



Or visit . . .

www.fs.fed.us/r3/prescott/

The U.S. Department of Agriculture (USDA) prohibits discrimination in all its programs and activities on the basis of race, color, national origin, age, disability, and where applicable, sex, marital status, familial status, parental status, religion, sexual orientation, genetic information, political beliefs, reprisal, or because all or part of an individual's income is derived from any public assistance program. (Not all prohibited bases apply to all programs.) Persons with disabilities who require alternative means for communication of program information (Braille, large print, audiotape, etc.) should contact USDA's TARGET Center at (202) 720-2600 (voice and TTY). To file a complaint of discrimination, write to USDA, Director, Office of Civil Rights, 1400 Independence Avenue, SW, Washington, DC 20250-9410 or call (800) 795-3272 (voice) or (202) 720-6382 (TTY). USDA is an equal opportunity provider and employer.

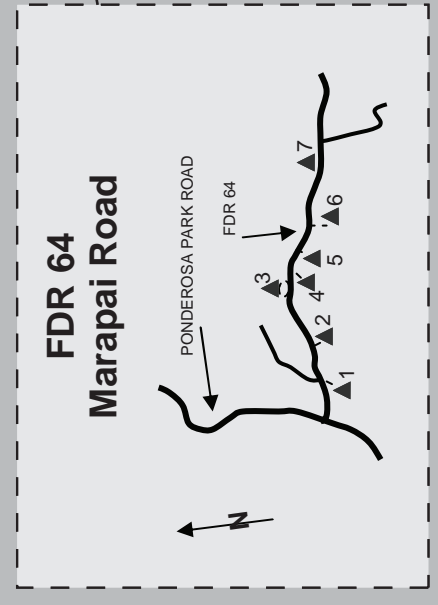
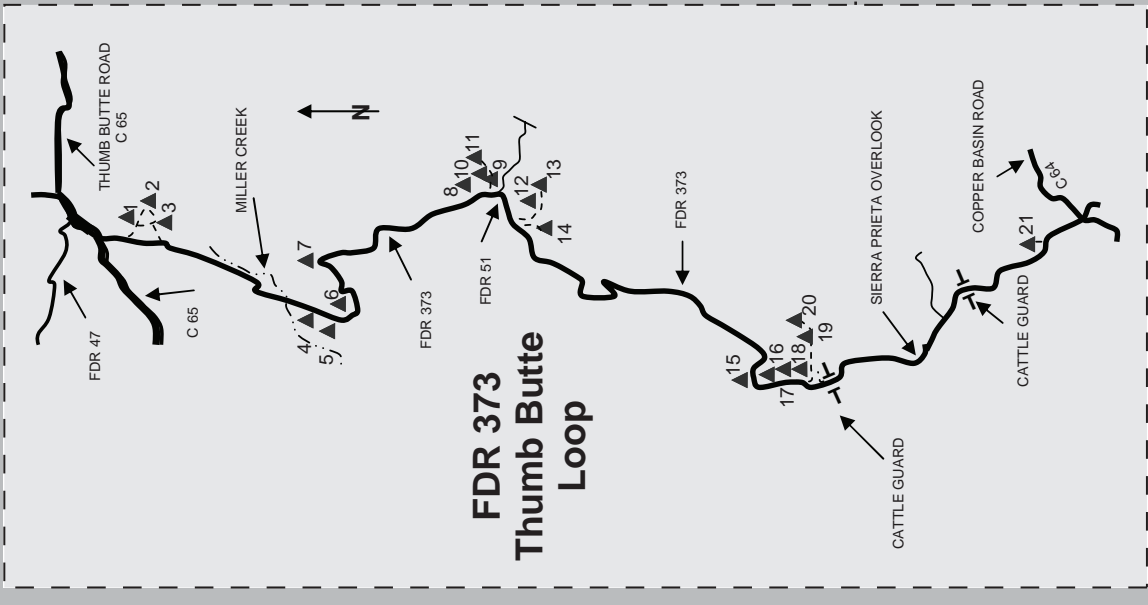
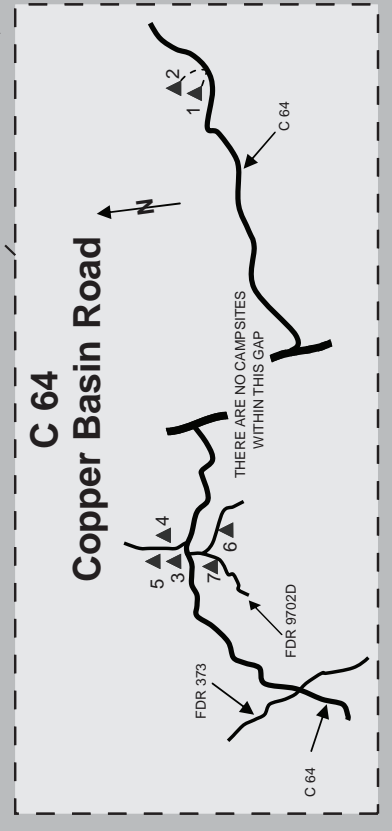
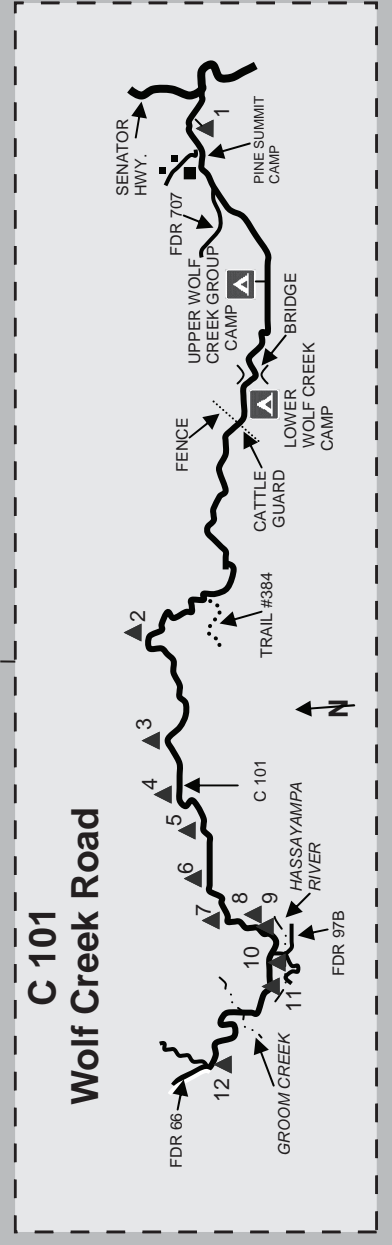
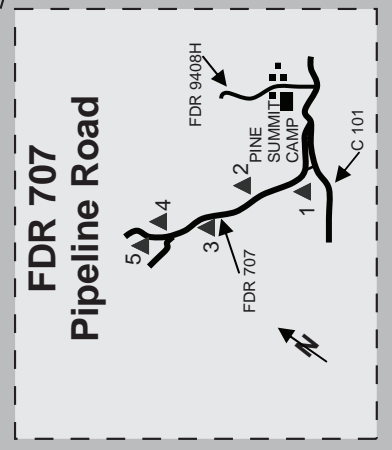
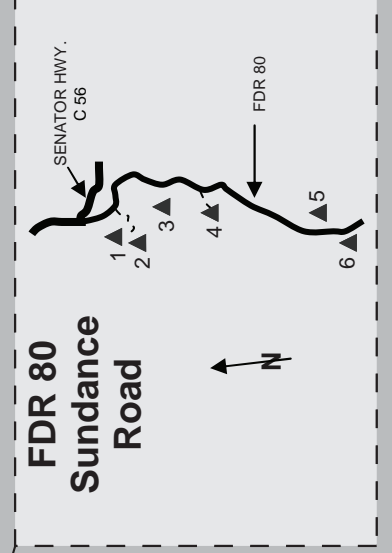
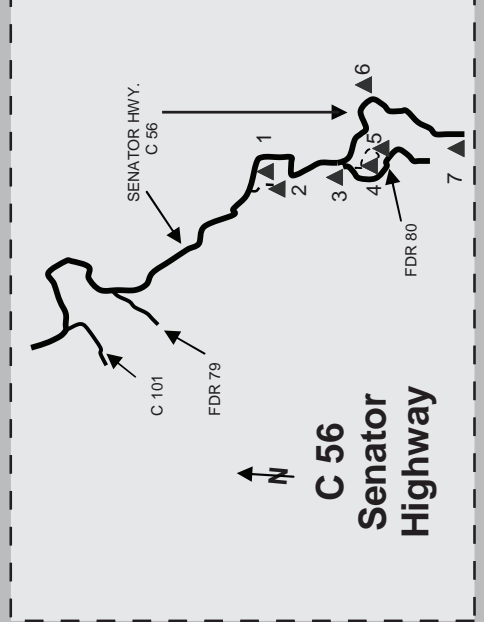
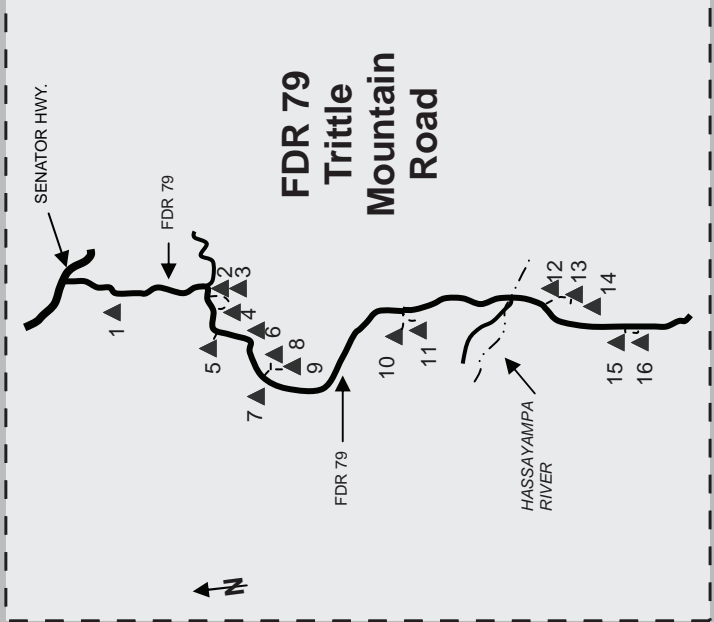
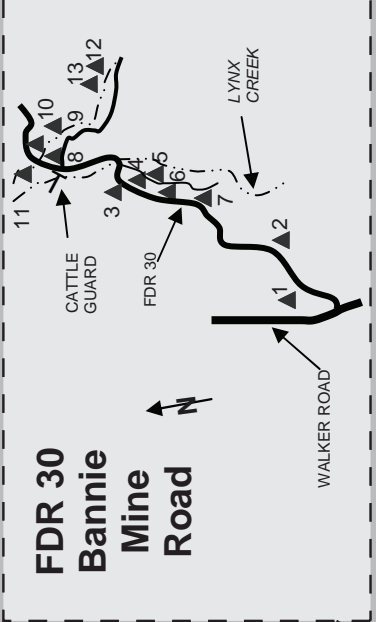
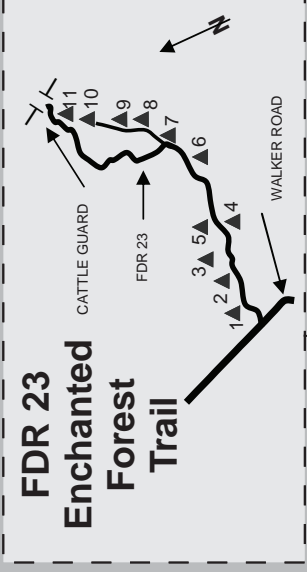
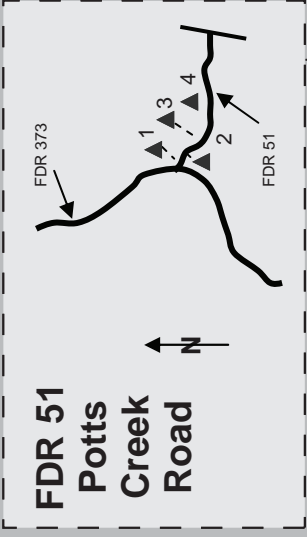
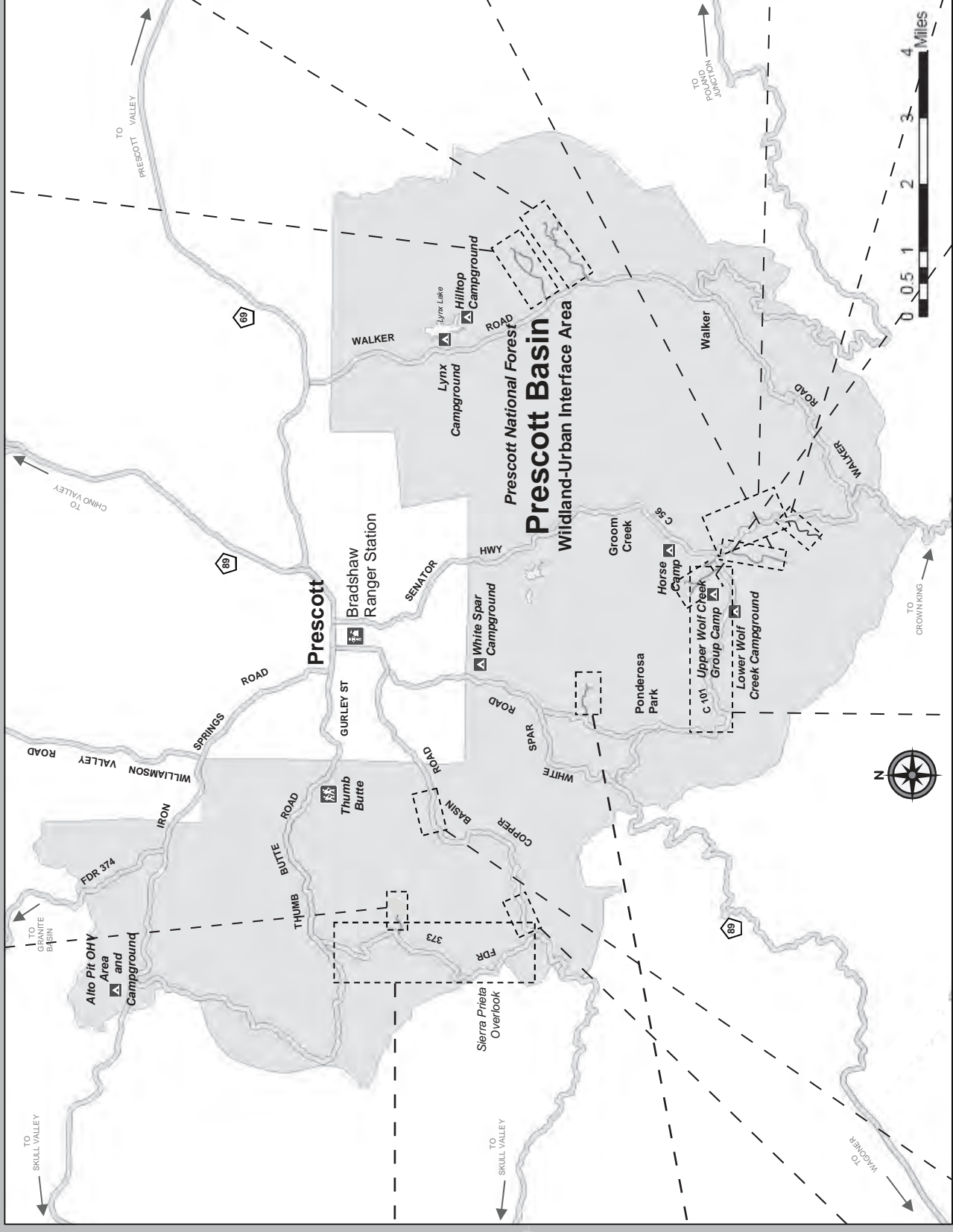


United States Department of Agriculture
 Forest Service
 Southwestern Region
 RG-R3-09-7

Mingus Mountain Area
 Verde Ranger District
 Prescott National Forest



Dispersed Camping in the Prescott Basin





- Find a discreet place! This will help avoid other people coming into contact with human waste.
- Defecate at least 200 feet from water sources and campsites.

- Carry and use a hand trowel.
- Dig a hole 6 to 8 inches deep and bury your waste.

When Nature Calls . . .

Key: FDR = Forest Development Road; C = County Road

Dispersed Camping Locations	No. of Sites	Directions (from downtown Prescott)		Trailer or RV Suitability (No. of Campsites)
		Yes	No	
FDR 23 Enchanted Forest Trail	11	9	2	2
FDR 30 Bannie Mine Road	13	11	2	2
C 56 Senator Hwy./Mt. Vernon Street	7	6	1	1
FDR 79 Tittle Mountain Road	16	11	5	5
FDR 80 Sundance Road	6	2	4	4
FDR 707 Pipeline Road	5	4	1	1
C 101 Wolf Creek Road	12	8	4	4
FDR 64 Maripal Road	7	7	0	0
C 64 Copper Basin Road	7	6	1	1
FDR 373 Thumb Butte Loop	21	16	5	5
FDR 51 Potts Creek Road	8	6	2	2

Thank you . . . for cleaning your campsite!



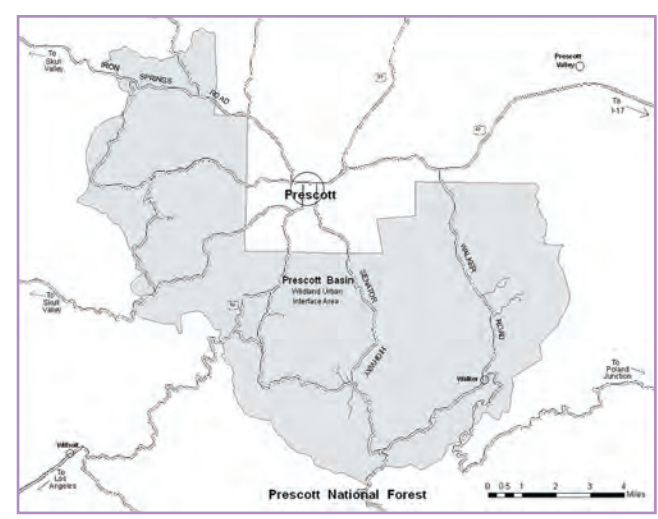
When you find a vertical steel post with a "Dispersed Camping" decal, you have found a place to camp. Each designated dispersed campsite has a place to park, a fire ring, and an area for a tent.

- Recreational camping is only allowed in developed and designated dispersed campsites in the Prescott Basin.
- Residing on national forest land is **not** allowed.
- Camping in designated dispersed campsites is allowed for 7 days within a 30-day period.
- Campfires are allowed only in fire rings provided. Make sure your fire is dead out before you leave!
- There is no garbage service—pack it in, pack it out!
- Bury human waste 6 to 8 inches deep and at least 200 feet away from water and campsites.
- Treat living plants with respect; carving and hacking on plants may kill them.
- Stay on designated trails and roads. No motorized cross-country travel is allowed on the forest.
- Keep pets on leash.
- To report a wildfire, please call 911.

Remember . . .

Welcome . . . to the Prescott Basin

The Prescott Basin area is immediately south, east, and west of Prescott, Arizona. The area is approximately 59,000 acres (about 4 percent of the Prescott National Forest).



The Prescott Basin is often referred to as a wildland-urban interface (WUI) area because the forested public lands are adjacent to the urbanized areas of the greater Prescott community.

Wildland-urban interface areas typically experience greater human impacts due to increased visitor use and demand for recreation than other National Forest System lands. This is why dispersed camping is only permitted in designated dispersed camping areas for 7 days in the Prescott Basin.



Dispersed Camping is . . .

. . . camping outside of developed campgrounds. In contrast to camping in developed campsites, dispersed camping is more primitive, and no facilities or services—such as trash collection, water, and toilets—are provided.

Be Careful With Fire

- Use only dead and down wood that fits in the fire ring.
- Burn all fires down to ash.
- To extinguish your fire, pour water and stir with a shovel until cold.
- Feel for heat. If the extinguished campfire is too hot to touch, it is too hot to leave!



Trash

- You must dispose of your trash.
- Pack it in, pack it out!
- Do not put cans, glass, aluminum foil or any non-paper trash into the fire ring.



For More Information, Contact . . .

Prescott National Forest
344 S. Cortez Street
Prescott, AZ 86303
Phone: (928) 443-8000
Fax: (928) 443-8008



Or visit . . .

www.fs.fed.us/r3/prestcott/

The U.S. Department of Agriculture (USDA) prohibits discrimination in all its programs and activities on the basis of race, color, national origin, age, disability, and where applicable, sex, marital status, familial status, parental status, religion, sexual orientation, genetic information, political beliefs, reprisal, or because all or part of an individual's income is derived from any public assistance program. (Not all prohibited bases apply to all programs.) Persons with disabilities who require alternative means for communication of program information (Braille, large print, audiotape, etc.) should contact USDA's TARGET Center at (202) 720-2600 (voice and TTY). To file a complaint of discrimination, write to USDA, Director, Office of Civil Rights, 1400 Independence Avenue, SW, Washington, DC 20250-9410 or call (800) 795-3272 (voice) or (202) 720-6382 (TTY). USDA is an equal opportunity provider and employer.



United States Department of Agriculture
Forest Service
Southwestern Region
RG-R3-09-8

Designated Dispersed Camping in the Prescott Basin

Bradshaw Ranger District
Prescott National Forest



Route Number	Distance / Side of the Road	Vehicle Type	Dates Allowed
100	100	Same as permitted on road	Same as permitted on road
101	101	Same as permitted on road	Same as permitted on road
102	102	Same as permitted on road	Same as permitted on road
103	103	Same as permitted on road	Same as permitted on road
104	104	Same as permitted on road	Same as permitted on road
105	105	Same as permitted on road	Same as permitted on road
106	106	Same as permitted on road	Same as permitted on road
107	107	Same as permitted on road	Same as permitted on road
108	108	Same as permitted on road	Same as permitted on road
109	109	Same as permitted on road	Same as permitted on road
110	110	Same as permitted on road	Same as permitted on road
111	111	Same as permitted on road	Same as permitted on road
112	112	Same as permitted on road	Same as permitted on road
113	113	Same as permitted on road	Same as permitted on road
114	114	Same as permitted on road	Same as permitted on road
115	115	Same as permitted on road	Same as permitted on road
116	116	Same as permitted on road	Same as permitted on road
117	117	Same as permitted on road	Same as permitted on road
118	118	Same as permitted on road	Same as permitted on road
119	119	Same as permitted on road	Same as permitted on road
120	120	Same as permitted on road	Same as permitted on road
121	121	Same as permitted on road	Same as permitted on road
122	122	Same as permitted on road	Same as permitted on road
123	123	Same as permitted on road	Same as permitted on road
124	124	Same as permitted on road	Same as permitted on road
125	125	Same as permitted on road	Same as permitted on road
126	126	Same as permitted on road	Same as permitted on road
127	127	Same as permitted on road	Same as permitted on road
128	128	Same as permitted on road	Same as permitted on road
129	129	Same as permitted on road	Same as permitted on road
130	130	Same as permitted on road	Same as permitted on road
131	131	Same as permitted on road	Same as permitted on road
132	132	Same as permitted on road	Same as permitted on road
133	133	Same as permitted on road	Same as permitted on road
134	134	Same as permitted on road	Same as permitted on road
135	135	Same as permitted on road	Same as permitted on road
136	136	Same as permitted on road	Same as permitted on road
137	137	Same as permitted on road	Same as permitted on road
138	138	Same as permitted on road	Same as permitted on road
139	139	Same as permitted on road	Same as permitted on road
140	140	Same as permitted on road	Same as permitted on road
141	141	Same as permitted on road	Same as permitted on road
142	142	Same as permitted on road	Same as permitted on road
143	143	Same as permitted on road	Same as permitted on road
144	144	Same as permitted on road	Same as permitted on road
145	145	Same as permitted on road	Same as permitted on road
146	146	Same as permitted on road	Same as permitted on road
147	147	Same as permitted on road	Same as permitted on road
148	148	Same as permitted on road	Same as permitted on road
149	149	Same as permitted on road	Same as permitted on road
150	150	Same as permitted on road	Same as permitted on road
151	151	Same as permitted on road	Same as permitted on road
152	152	Same as permitted on road	Same as permitted on road
153	153	Same as permitted on road	Same as permitted on road
154	154	Same as permitted on road	Same as permitted on road
155	155	Same as permitted on road	Same as permitted on road
156	156	Same as permitted on road	Same as permitted on road
157	157	Same as permitted on road	Same as permitted on road
158	158	Same as permitted on road	Same as permitted on road
159	159	Same as permitted on road	Same as permitted on road
160	160	Same as permitted on road	Same as permitted on road
161	161	Same as permitted on road	Same as permitted on road
162	162	Same as permitted on road	Same as permitted on road
163	163	Same as permitted on road	Same as permitted on road
164	164	Same as permitted on road	Same as permitted on road
165	165	Same as permitted on road	Same as permitted on road
166	166	Same as permitted on road	Same as permitted on road
167	167	Same as permitted on road	Same as permitted on road
168	168	Same as permitted on road	Same as permitted on road
169	169	Same as permitted on road	Same as permitted on road
170	170	Same as permitted on road	Same as permitted on road
171	171	Same as permitted on road	Same as permitted on road
172	172	Same as permitted on road	Same as permitted on road
173	173	Same as permitted on road	Same as permitted on road
174	174	Same as permitted on road	Same as permitted on road
175	175	Same as permitted on road	Same as permitted on road
176	176	Same as permitted on road	Same as permitted on road
177	177	Same as permitted on road	Same as permitted on road
178	178	Same as permitted on road	Same as permitted on road
179	179	Same as permitted on road	Same as permitted on road
180	180	Same as permitted on road	Same as permitted on road
181	181	Same as permitted on road	Same as permitted on road
182	182	Same as permitted on road	Same as permitted on road
183	183	Same as permitted on road	Same as permitted on road
184	184	Same as permitted on road	Same as permitted on road
185	185	Same as permitted on road	Same as permitted on road
186	186	Same as permitted on road	Same as permitted on road
187	187	Same as permitted on road	Same as permitted on road
188	188	Same as permitted on road	Same as permitted on road
189	189	Same as permitted on road	Same as permitted on road
190	190	Same as permitted on road	Same as permitted on road
191	191	Same as permitted on road	Same as permitted on road
192	192	Same as permitted on road	Same as permitted on road
193	193	Same as permitted on road	Same as permitted on road
194	194	Same as permitted on road	Same as permitted on road
195	195	Same as permitted on road	Same as permitted on road
196	196	Same as permitted on road	Same as permitted on road
197	197	Same as permitted on road	Same as permitted on road
198	198	Same as permitted on road	Same as permitted on road
199	199	Same as permitted on road	Same as permitted on road
200	200	Same as permitted on road	Same as permitted on road

Area Name	Travel Management Area	Season of Use
Alto Pt	All nonhighway vehicles, less than 50 inches wide	Year round
Hayfield Draw	All nonhighway vehicles, less than 50 inches wide	Year round

Route Number	Motor Vehicle Use Allowed	How to Locate
52	Closures dependent on seasonal weather conditions	Roads open to highway legal vehicles only. (928) 443-8000 TTY: (928) 443-8001
104	Closures dependent on seasonal weather conditions	Roads open to all vehicles. (928) 443-8000 TTY: (928) 443-8001

PROHIBITIONS
 It is prohibited to possess or operate a motor vehicle on National Forest System lands on the Prescott National Forest other than in accordance with these designations (CFR 261.13).

Violators of 36 CFR 261.13 are subject to a fine of up to \$5,000, imprisonment for up to 6 months, or both (U.S.C. 3371(e)). This prohibition applies regardless of the presence or absence of signs.

This rule does not display nonmotorized uses, over-snow uses, or other facilities and attractions on the Prescott National Forest. Obtain forest visitor information from the local national forest office.

Designated roads, trails and areas may also be subject to temporary, emergency closures. As a visitor, you must comply with signs notifying you of such restrictions. A national forest may issue an order to close a road, trail or area on a temporary basis to protect the life, health, or safety of forest visitors or the natural or cultural resources in these areas. Such temporary and/or emergency closures are consistent with the Travel Management Rule (36 CFR 212.52 (b)), 36 CFR 201 subpart B.

The designation "road or trail open to all motor vehicles" does not supersede State traffic law.

OPERATOR RESPONSIBILITIES
 Operating a motor vehicle on National Forest System roads, National Forest System trails, and in areas on National Forest System lands carries a greater responsibility than operating that vehicle in a city or other developed setting. Not only must you know and follow all applicable traffic laws, you need to show concern for the environment as well as other forest users. The misuse of motor vehicles can lead to the temporary or permanent closure of any designated road, trail, or area. As a motor vehicle operator, you are also subject to State traffic laws, including State requirements for licensing, registration, and operation of the vehicle in question.

Motor vehicle use, especially off-highway vehicle use, involves inherent risks that may cause property damage, serious injury, and possibly death to participants. Drive cautiously and anticipate rough surfaces and features, such as snow, mud, vegetation, and water crossings common to remote driving conditions. By your participation, you voluntarily assume full responsibility for these dangers, risks, and dangers. Take care at all times to protect yourself and those under your responsibility.

Much of the Prescott National Forest is remote. Medical assistance may not be readily available. Cellular telephones do not work in many areas of the Prescott National Forest. Take adequate food, water, fire-aid supplies, and other equipment appropriate for the conditions and expected weather.

ALWAYS REMEMBER TO RESPECT PRIVATE LAND. PROTECT YOUR PRIVILEGE. STAY ON DESIGNATED ROADS AND TRAILS IN DESIGNATED AREAS.

Read and understand this map in its entirety. If you have questions, please contact the Prescott National Forest for clarification.

As a motor vehicle operator on a National Forest System road, trail, or area you must comply with this map, as well as all Federal, State, and local laws and regulations. Compliance with these rules is your responsibility.

PURPOSE AND CONTENTS OF THIS MAP
 The designations shown on this motor vehicle use map are effective as of the date on the front cover and will remain in effect until superseded by the next year's motor vehicle use map. It is the responsibility of the user to acquire the current MVLUM. This map shows the National Forest System roads, National Forest System trails, and the areas on National Forest System lands in the Prescott National Forest that are designated for motor vehicle use pursuant to 36 Code of Federal Regulations (CFR) 212.51. This map also contains a list of those designated roads, trails, and areas, the types of designations, and the areas for motor vehicle use by a particular class of vehicle under 36 CFR 212.51 should not be interpreted as encouraging or inviting use or implying that the road, trail or area is passable, actively maintained, or safe for travel. Motor vehicle designations include parking along designated routes and facilities associated with designations when it is safe to do so and when not causing damage to National Forest System resources. Seasonal weather conditions and natural events may render designated roads and trails impassable for extended periods. Designated areas may contain dangerous or impassable terrain. Many designated roads and trails may be passable only by high-clearance vehicles or four-wheel-drive vehicles. Maintenance of designated roads and trails will depend on available resources, and many may receive little maintenance.

This motor vehicle use map identifies those roads, trails, and areas designated for motor vehicle use under 36 CFR 212.51 for the purpose of enforcing the prohibition in 36 CFR 201.13. This is a limited purpose. The other public roads are shown for information and navigation purposes only and are not subject to designation under the Forest Service travel management regulation.

These designations apply only to National Forest System roads, National Forest System trails, and areas on National Forest System lands.

Legend

- Roads Open to Highway Legal Vehicles
- Roads Open to All Vehicles
- Trails Open to Wheeled Vehicles 50" or Less in Width
- Trails Open to Motorcycles Only (See Dispersed Camping Table)
- Seasonal Designation (See Table)
- Interstate
- Highways, U.S., State
- Other Public Roads
- Information Site
- Peaks
- Forest or Unit Boundary
- National Forest System Lands
- Non-National Forest System Lands within the National Forest
- Wilderness Areas
- Lakes and Rivers

Scale: 0 0.5 1 2 3 4 Miles

EXPLANATION OF LEGEND ITEMS

Roads Open to Highway Legal Vehicles Only:
 These roads are open only to motor vehicles licensed under State law for general operation on all public roads within the State.

Roads Open to All Vehicles:
 These roads are open to all motor vehicles, including smaller off-highway vehicles that may not be licensed for highway.

Trails Open to Wheeled Vehicles 50" or Less in Width:
 These trails are open only to wheeled, motor vehicles less than 50 inches in width at the widest point on the vehicle.

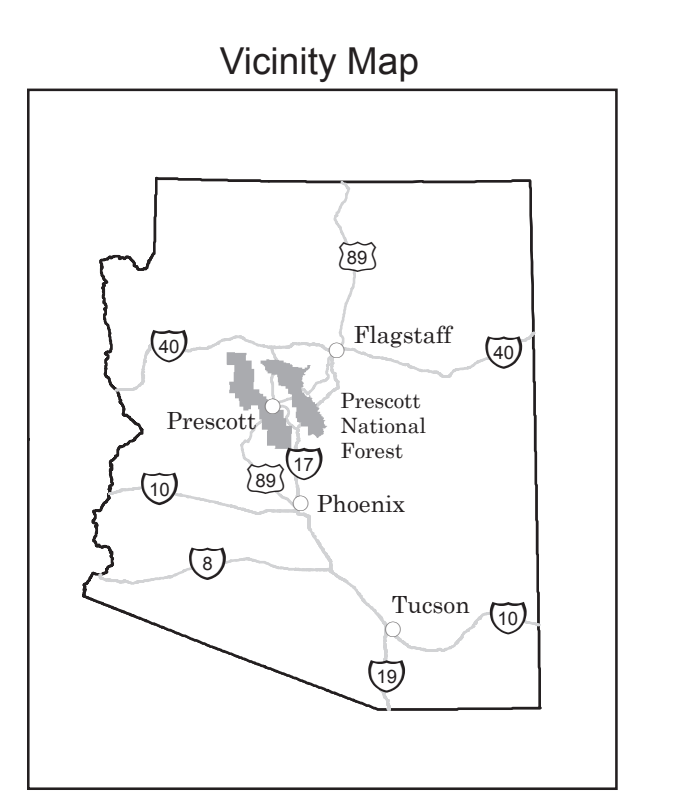
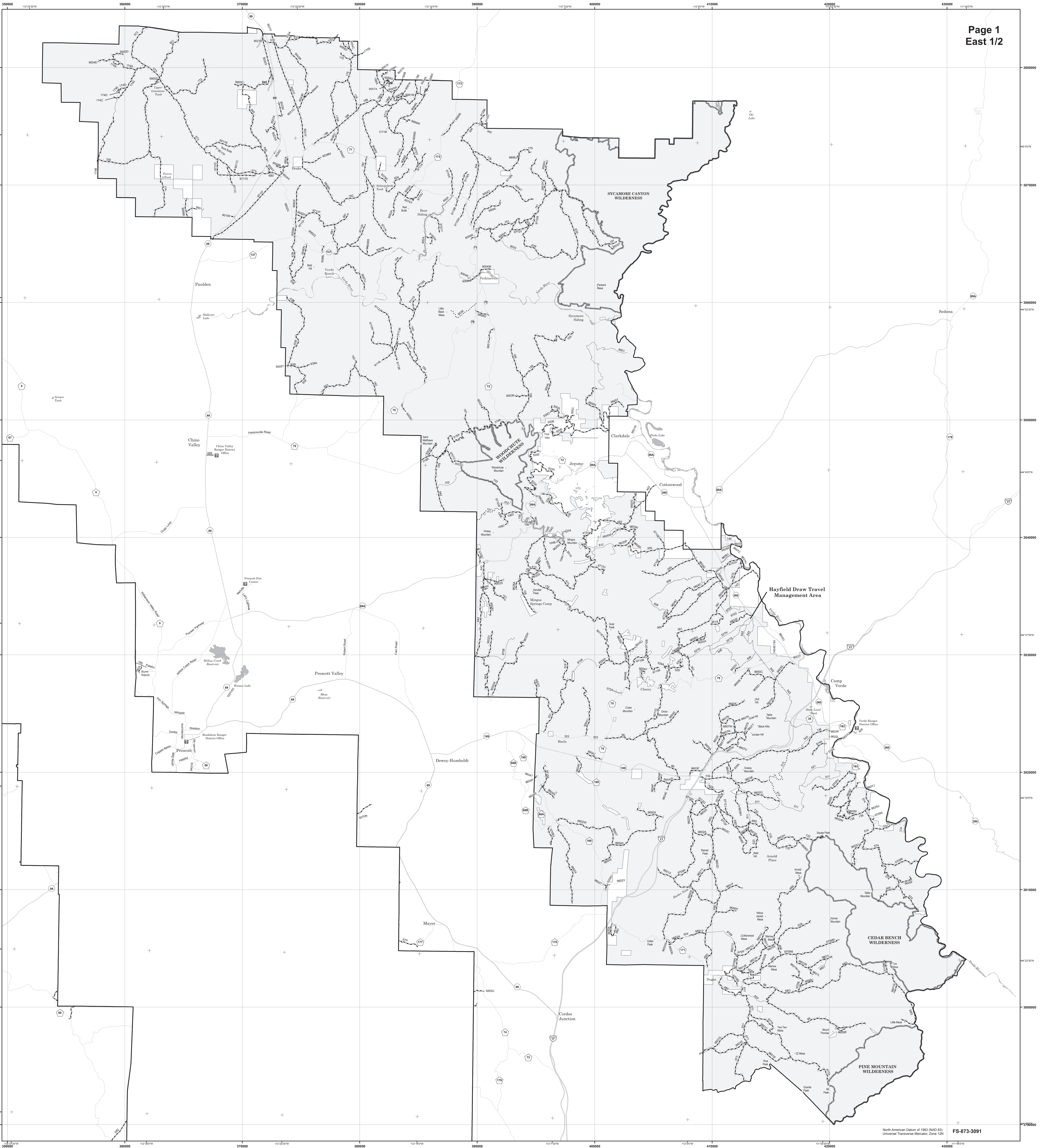
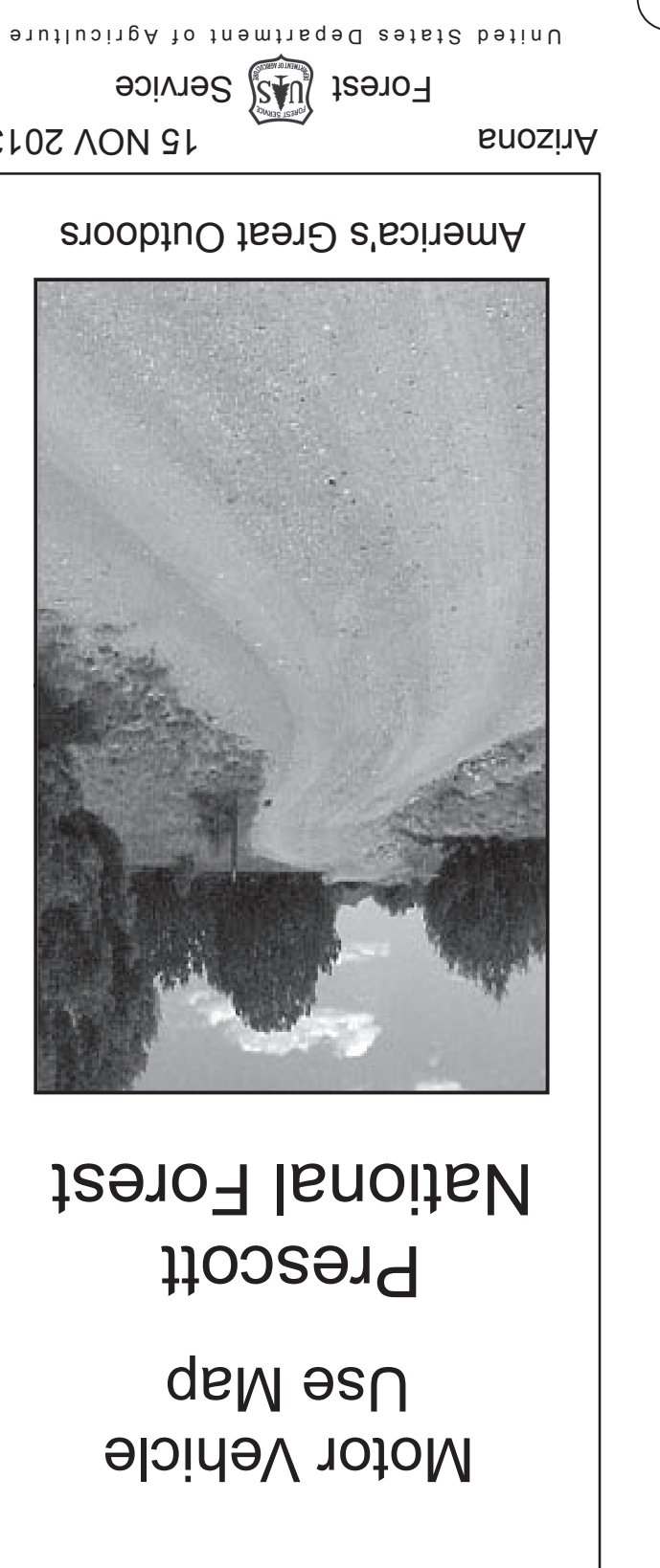
Trails Open to Motorcycles Only:
 These trails are open only to motorcycles. Sidecars are not permitted.

Seasonal Designation:
 This symbol, used in conjunction with one of the other road or trail symbols, indicates that the road or trail is open only during certain portions of the year. Refer to Seasonal and Special Designation Table for further instructions.

Dispersed Camping:
 This symbol, used along with a designated road to indicate limited cross-country motor vehicle use with a specific distance of that route, solely for the purpose of dispersed camping. The dots indicate where this activity is permitted. They may be on the left, right, or both sides of the route. Refer to the Dispersed Camping table for specifics.

Other Public Roads and Trails:
 Interstate
 Highways, U.S., State
 Other Public Roads

These symbols are used to show routes the Forest Service does not have jurisdiction over and has not designated for motorized use. These symbols are part of the reference layers showing connections to towns and cities outside the forest boundary.



INFORMATION SOURCES

Prescott National Forest
 Supervisor's Office
 Phone: (928) 443-8000
 TTY: (928) 443-8001

Bradshaw Ranger District Office
 344 S. Cortez Street
 Prescott, AZ 86303
 Phone: (928) 443-8000
 TTY: (928) 443-8001

Chino Valley Ranger District Office
 735 N. Hwy. 89
 Chino Valley, AZ 86323
 Phone: (928) 777-2200
 TTY: (928) 443-8001

Verde Ranger District Office
 P.O. Box 370
 Camp Verde, AZ 86322
 Phone: (928) 567-4121
 TTY: (928) 443-8001

Prescott Fire Center
 2400 Melville Rd.
 Prescott, AZ 86301
 Phone: (928) 777-5610
 TTY: (928) 443-8001

www.fs.fed.us/r3/prestoc

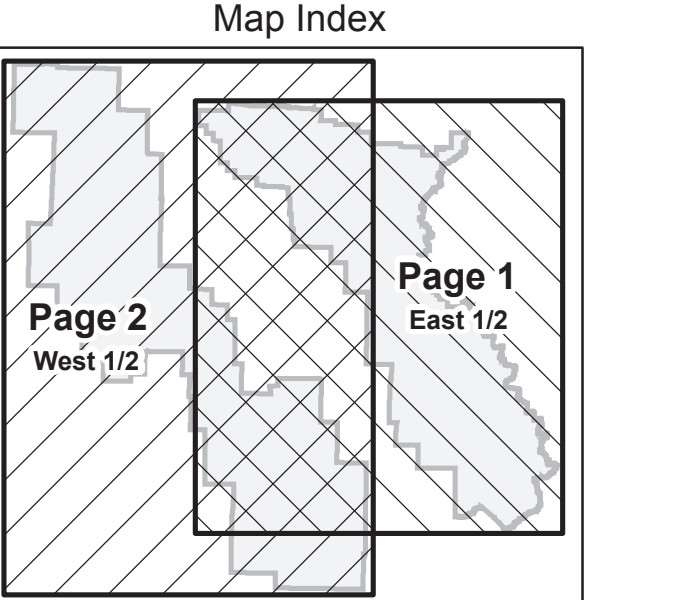
In Case of Emergency, Dial

The U.S. Department of Agriculture (USDA) prohibits discrimination in all its programs and activities on the basis of race, color, national origin, age, disability, and where applicable, sex, marital status, familial status, parental status, religion, sexual orientation, genetic information, political beliefs, reprisal, or because all or part of an individual's income is derived from any public assistance program. (Not all prohibited bases apply to all programs.) Persons with disabilities who require alternative means for communication of program information (Braille, large print, audiotape, etc.) should contact USDA's TARGET Center at (202) 725-2600 (voice and TDD). To file a complaint of discrimination, write to USDA, Director, Office of Civil Rights, 1400 Independence Avenue, SW, Washington, DC 20250, or call (800) 795-3272 (voice) or



tread lightly!
 LEAVING A GOOD IMPRESSION

Travel and recreate with minimum impact. Respect the environment and the rights of others. Educate yourself, plan and prepare before you go. Allow for future use of the outdoors by leaving it better than you found it. Discover the rewards of responsible recreation.



Legend

- Roads Open to Highway Legal Vehicles
- Roads Open to All Vehicles
- Trails Open to Wheeled Vehicles 50' or Less in Width
- Trails Open to Motorcycles Only
- Dispersed Camping (See Dispersed Camping Table)
- Seasonal Designation (See Table)
- Interstate
- Highway, U.S., State
- Other Public Roads
- Information Site
- Peaks
- Forest or Unit Boundary
- National Forest System Lands
- Non-National Forest System Lands within the National Forest
- Wilderness Areas
- Lakes and Rivers

0 0.5 1 2 3 4 Miles

EXPLANATION OF LEGEND ITEMS

Roads Open to Highway Legal Vehicles Only:
These roads are open only to motor vehicles licensed under State law for general operation on all public roads within the state.

Roads Open to All Vehicles:
These roads are open to all motor vehicles, including smaller off-highway vehicles that may not be licensed for highway.

Trails Open to Wheeled Vehicles 50' or Less in Width:
These trails are open only to wheeled, motor vehicles less than 50 inches in width at the widest point on the vehicle.

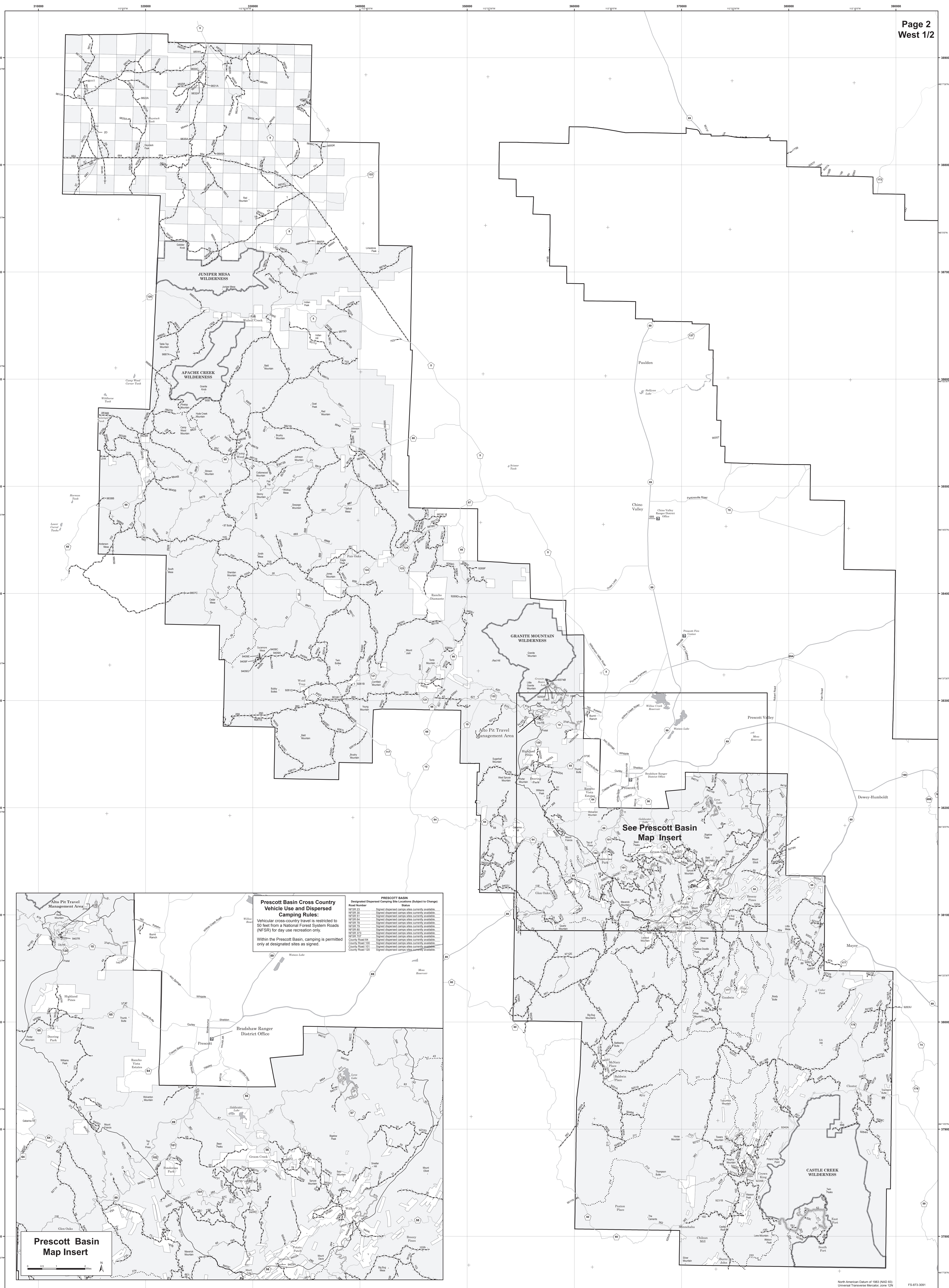
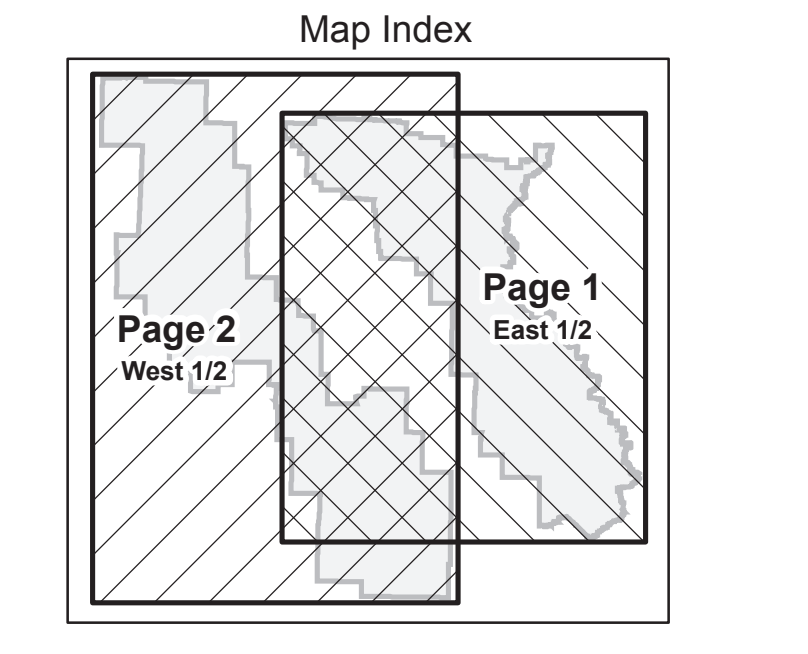
Trails Open to Motorcycles Only:
These trails are open only to motorcycles. Sidecars are not permitted.

Seasonal Designation:
This symbol, used in conjunction with one of the other road or trail symbols, indicates that the road or trail is open only during certain portions of the year. Refer to Seasonal and Special Designation Table for further instructions.

Dispersed Camping:
This symbol is used along with a designated road to indicate limited cross country motor vehicle use within a specific distance of that route, solely for the purpose of dispersed camping. The dots indicate where this activity is permitted. They may be on the left, right, or both sides of the route. Refer to the Dispersed Camping table for specifics.

Other Public Roads and Trails:
Interstate
Highways, U.S., State
Other Public Roads

These symbols are used to show routes the Forest Service does not have jurisdiction over and has not designated for restricted use. These symbols are part of the reference layers showing connections to towns and cities outside the forest boundary.

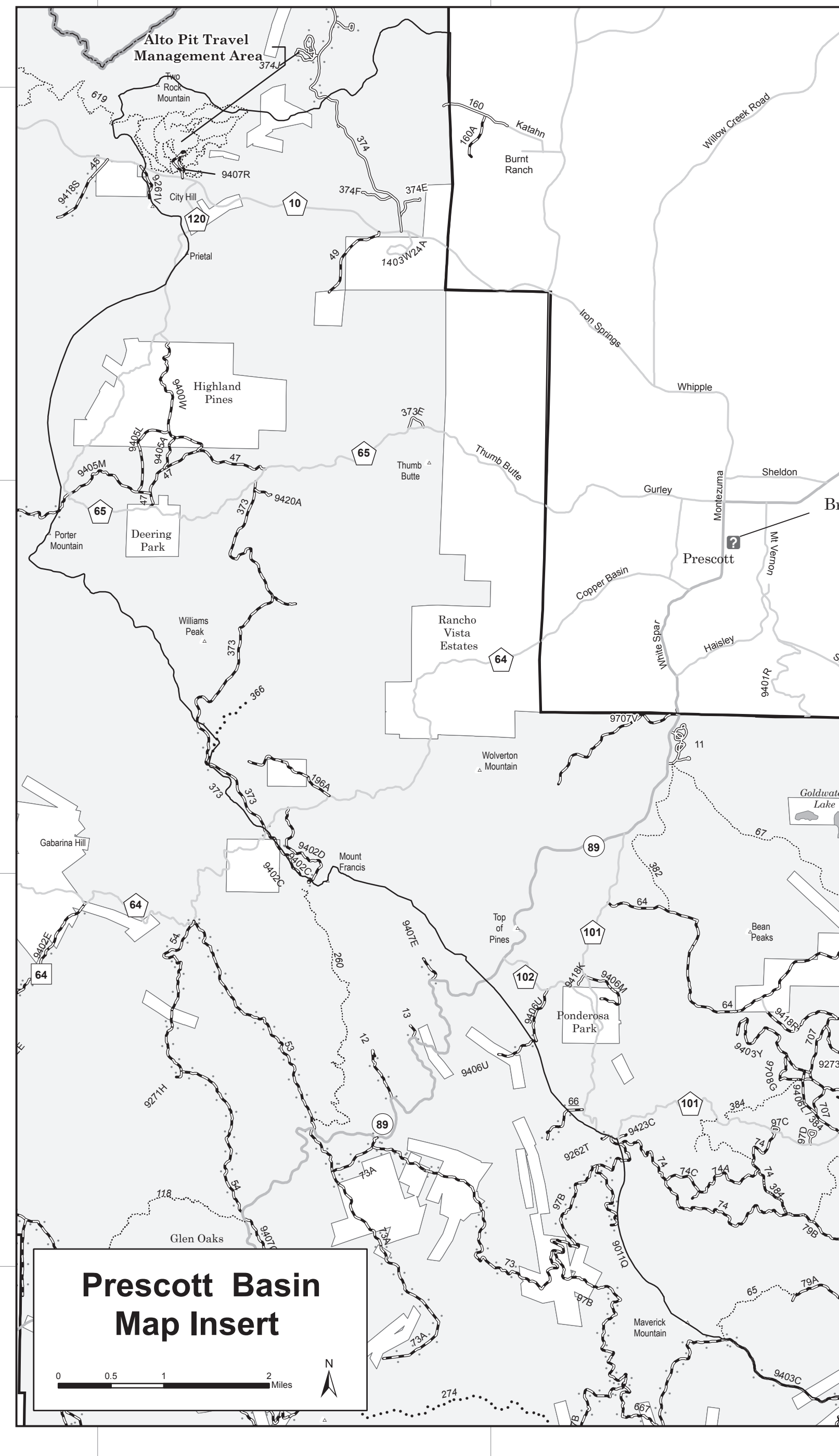


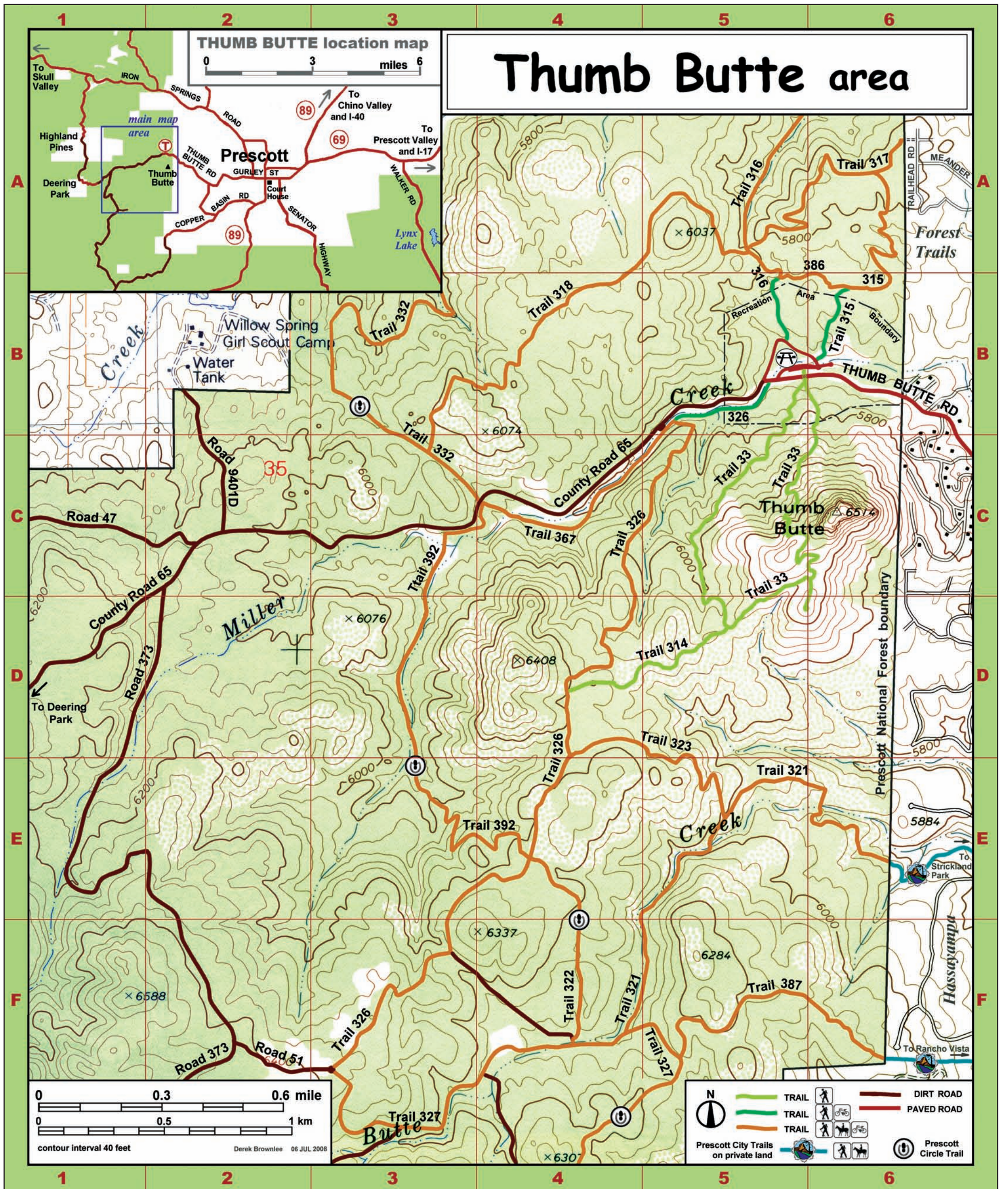
See Prescott Basin
Map Insert

Prescott Basin Cross Country Vehicle Use and Dispersed Camping Rules:
Vehicular cross-country travel is restricted to 50 feet from a National Forest System Road (NFSR) for day use recreation only.
Within the Prescott Basin, camping is permitted only at designated sites as signed.

PRESCOTT BASIN Designated Dispersed Camping Sites (Subject to Change)

Road Number	Site	Status
NFSR 01	...	Signed dispersed camps sites currently available.
NFSR 02	...	Signed dispersed camps sites currently available.
NFSR 03	...	Signed dispersed camps sites currently available.
NFSR 04	...	Signed dispersed camps sites currently available.
NFSR 05	...	Signed dispersed camps sites currently available.
NFSR 06	...	Signed dispersed camps sites currently available.
NFSR 07	...	Signed dispersed camps sites currently available.
NFSR 08	...	Signed dispersed camps sites currently available.
NFSR 09	...	Signed dispersed camps sites currently available.
NFSR 10	...	Signed dispersed camps sites currently available.
NFSR 11	...	Signed dispersed camps sites currently available.
NFSR 12	...	Signed dispersed camps sites currently available.
NFSR 13	...	Signed dispersed camps sites currently available.
NFSR 14	...	Signed dispersed camps sites currently available.
NFSR 15	...	Signed dispersed camps sites currently available.
NFSR 16	...	Signed dispersed camps sites currently available.
NFSR 17	...	Signed dispersed camps sites currently available.
NFSR 18	...	Signed dispersed camps sites currently available.
NFSR 19	...	Signed dispersed camps sites currently available.
NFSR 20	...	Signed dispersed camps sites currently available.
NFSR 21	...	Signed dispersed camps sites currently available.
NFSR 22	...	Signed dispersed camps sites currently available.
NFSR 23	...	Signed dispersed camps sites currently available.
NFSR 24	...	Signed dispersed camps sites currently available.
NFSR 25	...	Signed dispersed camps sites currently available.
NFSR 26	...	Signed dispersed camps sites currently available.
NFSR 27	...	Signed dispersed camps sites currently available.
NFSR 28	...	Signed dispersed camps sites currently available.
NFSR 29	...	Signed dispersed camps sites currently available.
NFSR 30	...	Signed dispersed camps sites currently available.
NFSR 31	...	Signed dispersed camps sites currently available.
NFSR 32	...	Signed dispersed camps sites currently available.
NFSR 33	...	Signed dispersed camps sites currently available.
NFSR 34	...	Signed dispersed camps sites currently available.
NFSR 35	...	Signed dispersed camps sites currently available.
NFSR 36	...	Signed dispersed camps sites currently available.
NFSR 37	...	Signed dispersed camps sites currently available.
NFSR 38	...	Signed dispersed camps sites currently available.
NFSR 39	...	Signed dispersed camps sites currently available.
NFSR 40	...	Signed dispersed camps sites currently available.
NFSR 41	...	Signed dispersed camps sites currently available.
NFSR 42	...	Signed dispersed camps sites currently available.
NFSR 43	...	Signed dispersed camps sites currently available.
NFSR 44	...	Signed dispersed camps sites currently available.
NFSR 45	...	Signed dispersed camps sites currently available.
NFSR 46	...	Signed dispersed camps sites currently available.
NFSR 47	...	Signed dispersed camps sites currently available.
NFSR 48	...	Signed dispersed camps sites currently available.
NFSR 49	...	Signed dispersed camps sites currently available.
NFSR 50	...	Signed dispersed camps sites currently available.





Trails									
Number	Length (miles)	Map Grid	Activities	Comments	Number	Length (miles)	Map Grid	Activities	Comments
33 - Thumb Butte	1.75	C5		Very popular, well maintained trail. Great views from the top. HIKING ONLY!	323 - Butte Connection	0.6	D5		Views and connects Trails 326 and 321.
314 - Thumb Butte Spur	0.5	D5		Creates a loop trail when used with Trails 33 and 326.	326 - Thumb Butte Connector	2.0	B5 E4		Creates a hiking loop trail when using Trails 33 and 314. Accessible to horses from Trail 367.
315 - Watertower	0.7	B6		Very moderate trail. Connects to Trail 317. Southern end closed to horses.	327 - Pott's Creek	0.5	F3 F5		Part of a 45-mile trail that encircles the city of Prescott.
316 - Pine Lakes	1.4	A5		After a short climb, descends into Willow Creek riparian area. Southern end closed to horses.	332 - Javelina	3.6	B3		Part of a 45-mile trail that encircles the city of Prescott.
317 - Ridgetop	0.6	A6		Climbs to a ridge with good views. East end goes into a subdivision.	367 - Miller Creek	0.7	C4		Parallels Thumb Butte Road along Miller Creek.
318 - West	1.4	C3 A5		At the western trailhead, horses may access this trail.	386 - Pine Lake Connector	0.3	B6		An easy, short trail. Provides a loop when used with Trails 315 and 316.
321 - Butte Creek	1.5	E6 F4		Can be accessed from a city trail in Strickland Park.	387 - Rio Vista	0.7	F5		Can be accessed from a city trail.
322 - Circle Connection	0.5	F4		Part of a 45-mile trail that encircles the city of Prescott.	392 - Garden Grove	1.5	C3 E4		Part of a 45-mile trail that encircles the city of Prescott.

